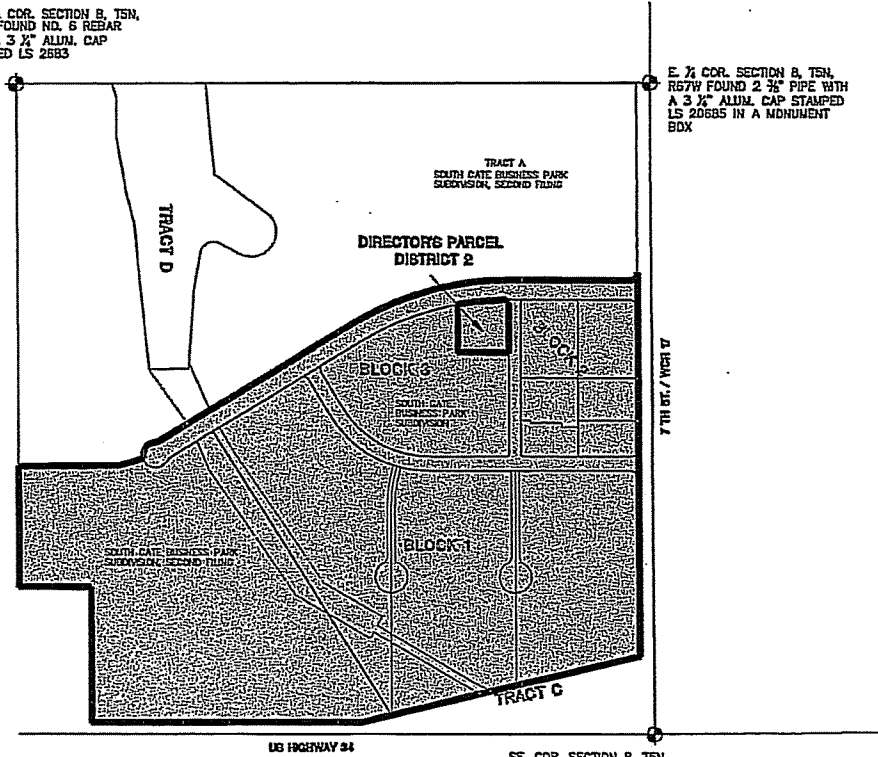


IRON MOUNTAIN METRO DISTRICT 2

LGID 65707

NE 1/4 COR. SECTION 8, T5N,
R67W FOUND NO. 5 REBAR
WITH A 3 1/2" ALUM. CAP
STAMPED LS 2583

E 1/2 COR. SECTION 8, T5N,
R67W FOUND 2 3/4" PIPE WITH
A 3 1/2" ALUM. CAP STAMPED
LS 20685 IN A MONUMENT
BOX



US HIGHWAY 84

7TH ST / HWY 84

SE COR. SECTION 8, T5N,
R67W FOUND NO. 5 REBAR
WITH A 2 1/2" ALUM. CAP
STAMPED LS 6944 IN A
MONUMENT BOX